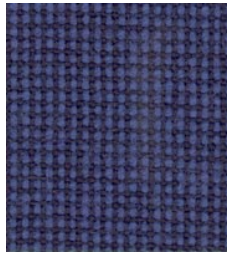


Prisgrupp/Price group 1

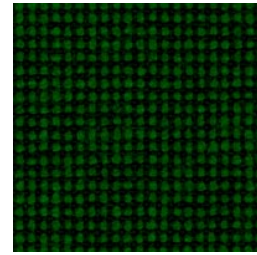
Nova



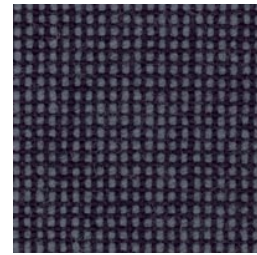
312



314



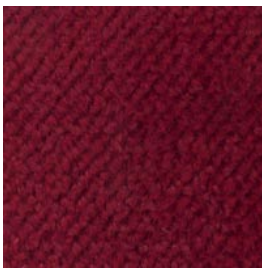
315



319

Prisgrupp/Price group 1

Plysch/Plush



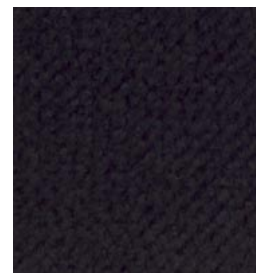
82



84



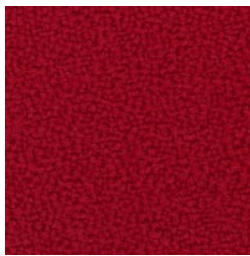
89



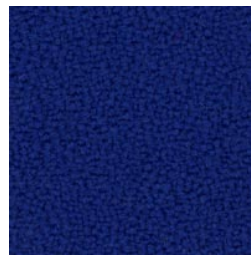
83

Prisgrupp/Price group 2

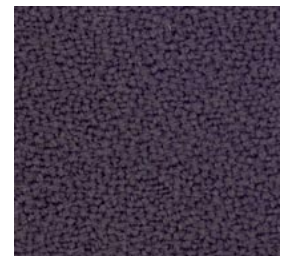
Gaja



64089



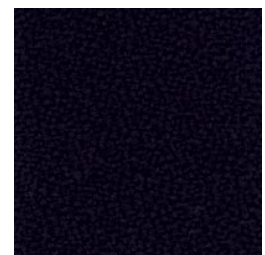
66069



60003



66005



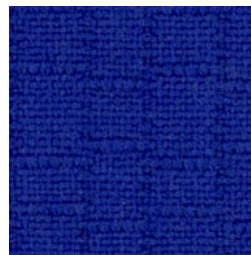
60999

Prisgrupp/Price group 2

Zip



322



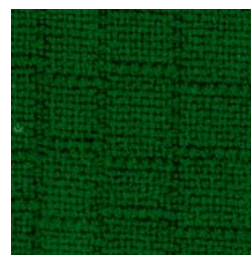
327



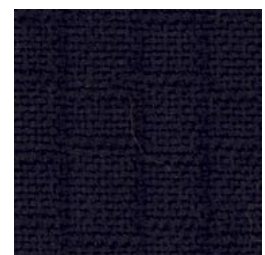
329



324



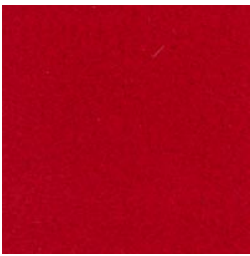
325



323

Prisgrupp/Price group 3

Comfort



1414



0040



0049



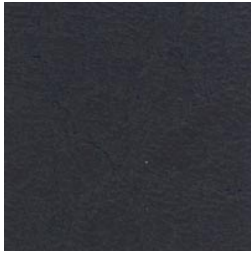
0050

Prisgrupp/Price group 3

Ambra



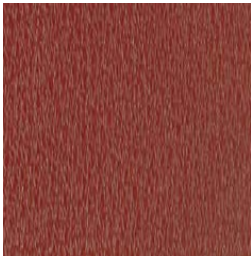
34



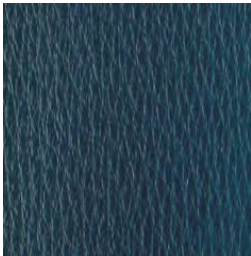
33

Prisgrupp/Price group 4

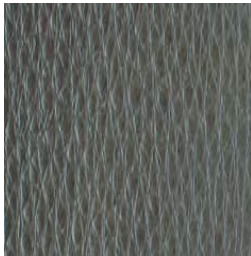
Läder/Leather



982



984



989

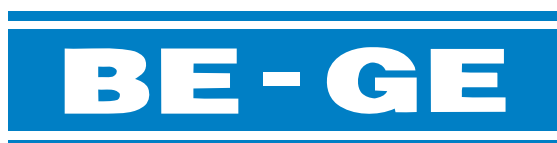


983

Specifikationer Specifications

Design	Material % Composition %							Specifikationer Qualities			Flamsäkerhet Flammability				Pris Price		
	Polyester	Ull * Wool	Viskos * Viscose	Polyamid	Polyurethan * Polyurethane	Konstläder * Artificial Leather	Läder * Leather	Slitstyrka * Abrasion resistance (Martindale)	Vikt * Weight m2	Ljusåktthet * Colour fastness	FMVSS 302/ISO 3795	SS EN 1021 Part 1&2	IMO 652 (16)	BS 5852		BS 7176	SS EN 8191 1&2
Ambla						100		>80.000	865	5		P1		P4	*		3
Comfort	88				12			>100.000	275	5		P1		P1			3
Gaja		100						50.000	375	5		*	*				2
Nova		65	28	7				50.000	500	5-6		*					1
Plysch/Plush	100							>60.000	430	>7	*						1
Läder/Leather							100	1)		3						*	4
Zip		97		3				100.000	453	5-6		*					2

1) 20 N DIN 53329-A



— Establ. 1934 —